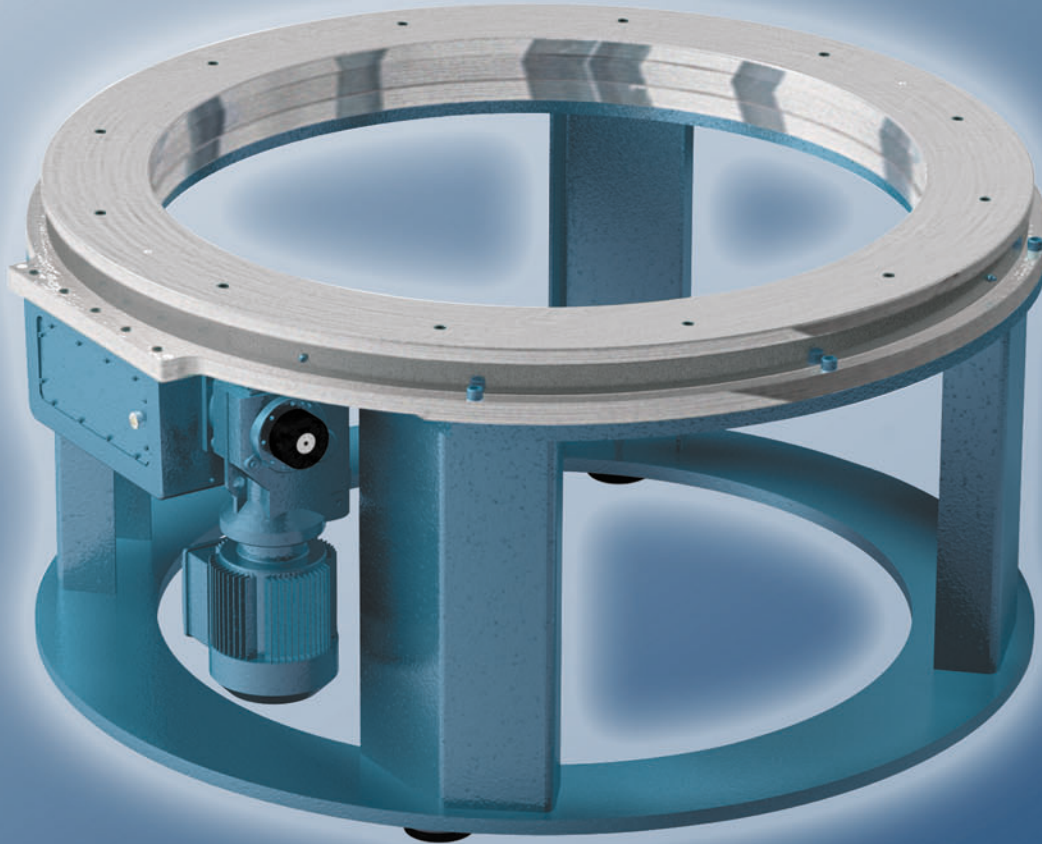


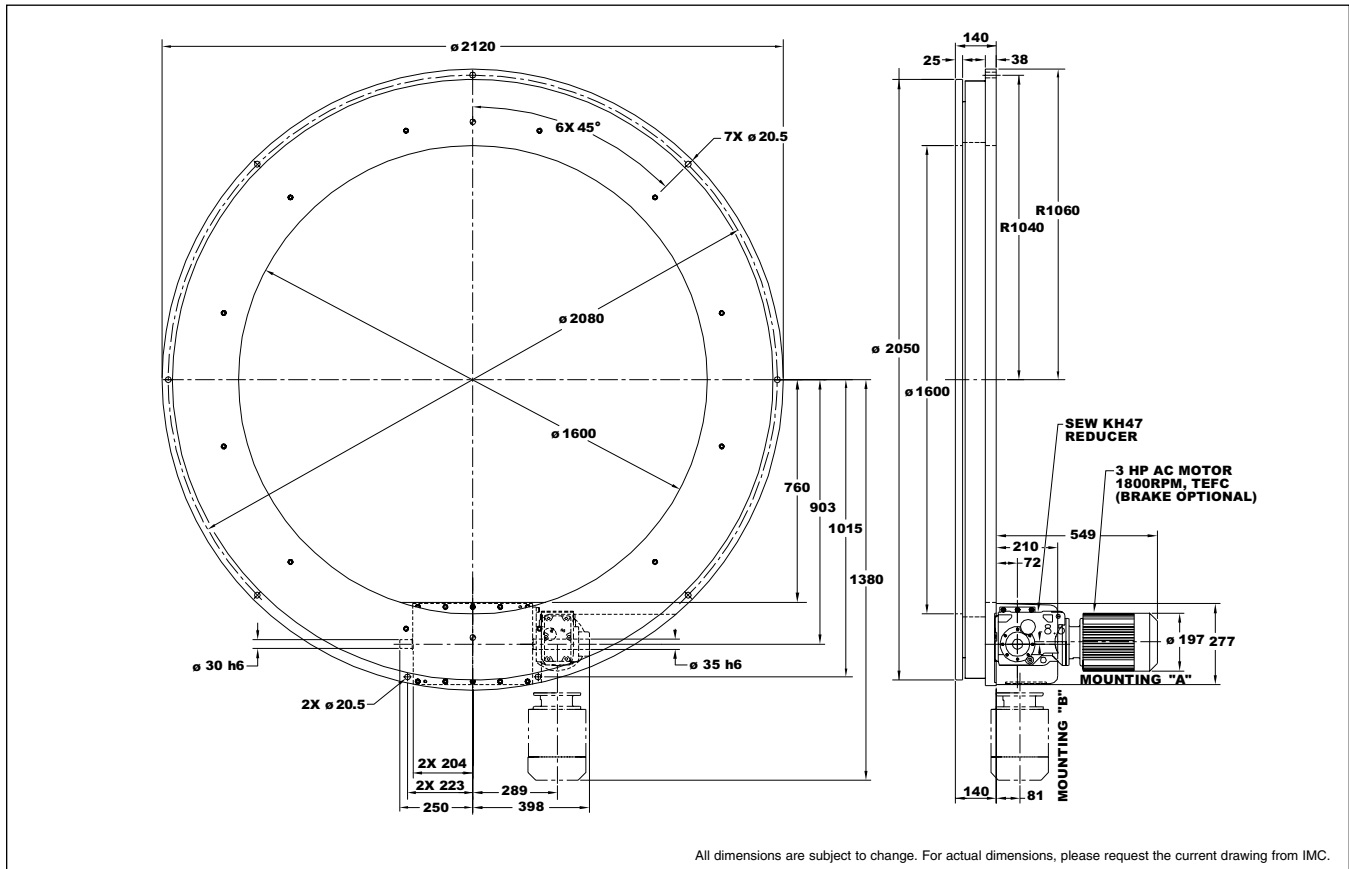
Camco Ring Drive



Features & Benefits

- ◆ Large Center Through-Hole to Accommodate Auxiliary Equipment
- ◆ High Precision Tool Steel Ground Cams Available in Standard and Special Motions
- ◆ Up to 60 Station Capability, Ideal for Multiple Part Automatic Assembly Machines
- ◆ Sealed 4-point Contact Output Bearing for Superior Accuracy and Load Capability
- ◆ Tapered Roller Bearings on Camshaft
- ◆ Modular Shaft-Mounted Reducers for Application Flexibility & Easy Maintenance
- ◆ Simple Access to Cam Followers for Easy Inspection and Replacement

2050RNG

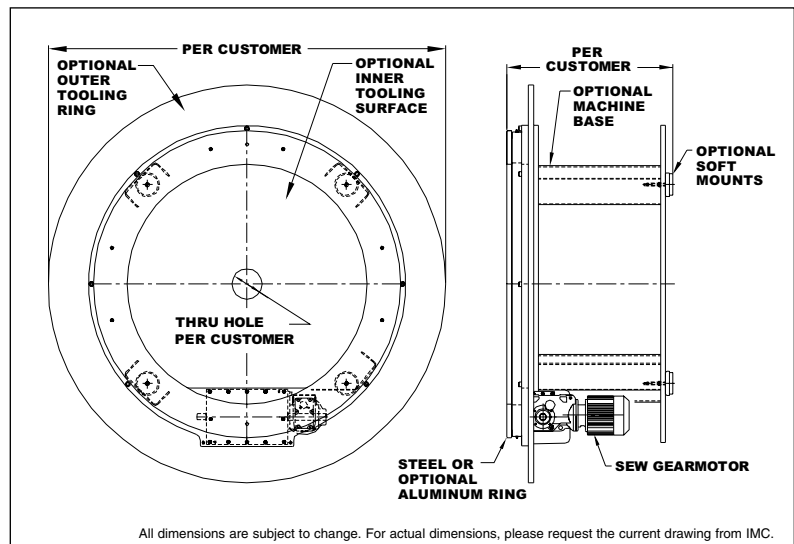


Applications

Printing and Decorating Machines, Rotary Automatic Assembly Machines – Ideal for Assembly Systems Requiring a Large Number of Tooling Stations

Options

- ◆ Servo-motor Drive Package for Applications Requiring Fewer than 6 Stations and Applications Requiring Process Flexibility
- ◆ Custom Dials & Tooling Plates
- ◆ Custom Reducer Drive Packages
- ◆ Machined Bases



RING DRIVE Capacities							
Stops (S)	Index Period (beta)	Motion	B10 Capacity at 50 RPM (in-lb)	Internal Inertia (lb-in ²)	B10 Capacity at 50 RPM (Nm)	Internal Inertia (kg-m ²)	Model
6	270	ms	35,017	116,588	3,957	34	1100RNG6H40-270
8	270	ms	44,072	116,588	4,980	34	1100RNG8H40-270
10	270	ms	50,211	117,095	5,674	34	1100RNG10H40-270
12	270	ms	55,172	116,588	6,234	34	1100RNG12H40-270
15	270	ms	61,395	117,095	6,937	34	1100RNG15H40-270
16	270	ms	63,405	117,264	7,164	34	1100RNG16H40-270
18	270	ms	66,878	117,601	7,557	34	1100RNG18H40-270
18	180	ms	68,323	117,601	7,720	34	1100RNG18H40-180
20	270	ms	69,601	117,939	7,865	35	1100RNG20H40-270
24	270	ms	60,378	116,588	6,822	34	1100RNG24H40-270
30	270	ms	65,627	117,095	7,415	34	1100RNG30H40-270
36	270	ms	70,043	117,601	7,914	34	1100RNG36H40-270
48	270	ms	77,258	119,022	8,730	35	1100RNG48H40-270
6	330	ms	58,181	444,734	6,574	130	1550RNG6H48-330
8	270	ms	78,270	445,349	8,844	130	1550RNG8H48-270
10	270	ms	90,276	444,734	10,201	130	1550RNG10H48-270
12	270	ms	105,145	446,580	11,881	131	1550RNG12H48-270
15	270	ms	119,962	444,734	13,555	130	1550RNG15H48-270
16	270	ms	125,190	445,349	14,146	130	1550RNG16H48-270
18	270	ms	133,118	446,580	15,042	131	1550RNG18H48-270
18	180	ms	129,320	446,580	14,612	131	1550RNG18H48-180
20	270	ms	141,792	447,810	16,022	131	1550RNG20H48-270
24	270	ms	152,142	450,272	17,191	132	1550RNG24H48-270
30	270	ms	133,398	444,734	15,073	130	1550RNG30H48-270
36	270	ms	143,030	446,580	16,162	131	1550RNG36H48-270
48	270	ms	157,484	449,617	17,795	132	1550RNG48H48-270
8	330	ms	125,147	1,389,470	14,141	407	2050RNG8H56-330
10	270	ms	140,822	1,389,470	15,912	407	2050RNG10H56-270
12	270	ms	197,693	1,396,641	22,338	409	2050RNG12H56-270
15	270	ms	226,466	1,393,952	25,589	408	2050RNG15H56-270
16	270	ms	240,657	1,396,641	27,193	409	2050RNG16H56-270
18	270	ms	250,362	1,402,016	28,289	410	2050RNG18H56-270
20	270	ms	263,670	1,389,470	29,793	407	2050RNG20H56-270
24	270	ms	294,184	1,396,641	33,241	409	2050RNG24H56-270
30	270	ms	324,691	1,407,397	36,688	412	2050RNG30H56-270
36	270	msc 0.5	345,054	1,385,885	38,989	406	2050RNG36H56-270
40	270	ms	293,218	1,389,470	33,132	407	2050RNG40H56-270
48	270	ms	312,768	1,396,641	35,341	409	2050RNG48H56-270
60	270	ms	337,196	1,407,397	38,101	412	2050RNG60H56-270

RING DRIVE Technical Specifications												
Model	Follower Size		(FR) Follower Radius		Accuracy			Maximum Through Hole		Minimum Through Hole*		
	mm	inches	mm	inches	Arc-Seconds	±mm @ FR	±inches @ FR	mm	inches	mm	inches	Angle (deg)
1100RNG	31.8	1.25	448.3	17.65	35	0.038	0.0015	800	31.5	600	23.6	60
1550RNG	38.1	1.5	648.0	25.51	25	0.039	0.0015	1,210	47.6	1,050	41.3	30
2050RNG	44.5	1.75	908.1	35.75	17	0.037	0.0015	1,600	63.0	1,520	59.8	20

*Maximum hole is reduced to minimum value near cam box over subtended angle.

Model	Output Bearing Capacity					
	Axial (lbs)	Radial (lbs)	Moment (in-lbs)	Axial (N)	Radial (N)	Moment (Nm)
1100RNG	16,552	1,513	149,376	73,732	6,738	16,879
1550RNG	17,417	2,269	227,622	77,583	10,105	25,720
2050RNG	18,281	3,025	305,868	81,434	13,473	34,561

Model	Input Drive			
	hp		kw	
1100RNG	1.00	2.00	0.75	1.49
1550RNG	1.00	2.00	0.75	1.49
2050RNG	2.00	3.00	1.49	2.24